



Electronic  
reference book

DeInfo Mini

User manual

## CONTENT

Licensing Agreement		4	2.3.1.	Formation of a List of Complexes	16		
Agreement Conditions		4	2.4.	Working with the User's Complexes	18		
Introduction		5					
Benefits of «DelInfoMini» Computer Software	5	2.4.1.				Manual Programs	19
		2.4.1.1.				Formation of the List of Programs	20
		2.4.2.	Automatic programs	20			
1.	Structure and Program capabilities	6	2.4.2.1.	Formation of the List of Programs	21		
1.1.	Program Structure	6					
1.2.	Minimal System Requirements	7					
1.3.	Standard connection route with the program	7					
2.	Working with the program	8	2.4.3	Formation of a User's Complex	22		
2.1.	Choosing language interface	11	2.4.4	Copying of the Complex	23		
2.2.	List of Complexes	12	2.5.	Interaction with the Device	23		
2.2.1.	Search by name	12	2.5.1.	Device Identification	23		
2.2.2.	Printing Complexes	12	2.5.2.	Recording	25		
2.3.	Working with the Basic programs of a Complex	16	2.5.3.	Reading	25		
			2.6.	Updating	26		
			2.7.	About the Program	27		

## LICENSING AGREEMENT

The present licensing agreement (hereina – referred to as the «Agreement») is concluded between the physical or the legal entity (hereina – referred to as the «User»), using the «DeInfoMini» program and database programs of «DETA-ELIS Europa GmbH» in the form of the provided documentation in either printed or electronic form.

## AGREEMENT CONDITIONS

1. The subject of the present Agreement is the right of usage for the «DeInfoMini» Program (hereinafter – referred to as the «Program»), provided to the User in the manner and by the conditions provided by the present Agreement.
2. All provisions of the present Agreement extend both to all Programs as a whole and to the Programs as separate components.
3. The user has the right to receive additional Program updates via the Internet without additional charge to the maximum extent possible.
4. The user has the right to use the Program only while working with the portable DeVitaMini series devices.
5. The user can't copy the Program, transfer it to third parties, or provide the program or its components for rent/hire, including in the form of source text.
6. «DETA-ELIS Europa GmbH» doesn't bear any responsibility for the consequences that arise from wrong or incorrect Program usage.
7. Any usage of the Program contradicting the current legislation of the Russian Federation is forbidden.
8. The Agreement doesn't provide property rights to the Program, but only the right of usage of the Program and its components according to conditions of the present Agreement.
9. The Program is the intellectual property of DETA-ELIS Europa GmbH. All property rights and copyright rights of the Program, including rights to the documentation and source text remain solely DETA-ELIS Europa GmbH property.
10. In case of violation of the copyright Agreement, the User bears responsibility according to the current legislation of the Russian Federation.

11. The present Agreement also applies to all updates provided to the User within the framework of support if the User isn't offered the option of adopting a new Agreement or additions to the agreement during the process of new program updates.

12. Before program usage, attentively examine conditions of the present Agreement. If you don't agree with the terms and conditions of the present Agreement, you should not use this program. Installation and application of the program indicates your full consent with all points of the present Agreement

## INTRODUCTION

«DeInfo Mini» (hereinafter – referred to as the «Program») is designated for those who use the low-frequency portable electromagnetic devices of DeVita Mini series..

## BENEFITS OF «DEINFOMINI» COMPUTER SOFTWARE

1. **A procedure for working with Complexes, with already existing programs.**
2. **Possibility of Internet updating is provided.**
3. **Compatibility with the following Operating systems: Windows XP; Windows Vista; Windows 7; Windows 8; Windows 10.**
- Possibility of working in several languages: Russian, English, Spanish, French, German, Greek.**
5. **The software program is located in the memory of the DeInfo Mini reference book and it launches automatically from the device. Installation on the computer isn't required.**

**Attentively review the manual and precisely follow its instructions!**

## 1. STRUCTURE AND PROGRAM CAPABILITIES

### 1.1. Program Structure

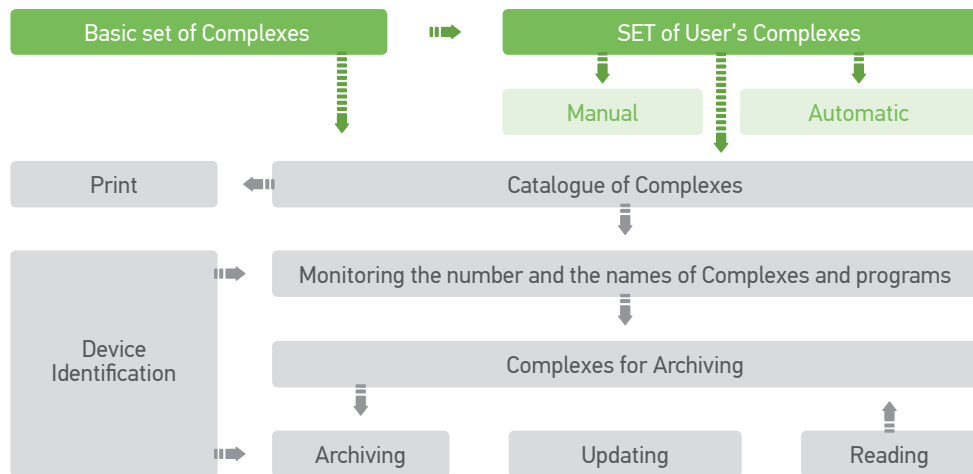


Fig. 1 Purpose of components of the program

**The basic list of programs** – module intended for storage and classification of delivered health-improvement programs.

**User programs** – module intended for independently creating programs.

**Device identification** – module intended for defining the type and modification of the device.

**List of Complexes** – module intended for drawing up and editing the list of written-down programs.

**Quantity control and the naming of programs (up to 50)** – module intended for compliance control of the list of written-down programs to device naming.

**Recording, Reading** – module providing program communication with the device.

**Print the program** – module intended for listing of healthimprovement programs.


**Updating** – module providing software updating on the Internet.

### 1.2 Minimal System Requirements

- Processor of 1 GHz
- Random access memory of 128 MB
- Existence of USB connection

Внимание! requirements.

### 1.3 Standard connection route with the program

1. The StartDelInfoMini.exe file starts the program.
2. With the help of the icon  on the main control panel, you can choose the interface language.
3. Turn on the device. Thus, the program has to recognize the device. Connect the device with a cable to the computer's USB port. In this case, the program must recognize the device and automatically read the Complexes that are recorded in the «Complexes» window.
4. Using the basic programs, compile a list of Complexes for recording on the device.
5. Record the list that was created on the device.
6. If necessary, print the Complex with the comments.

**Caution!** The lists are checked by the number (up to 50) and program names that are compatible with the programmable device at all stages of the software.

## 2. WORKING WITH THE PROGRAM

### 1. Starting the program

Start the software with the «StartDeInfoMini.exe» file. (Fig. 2)

When the program starts, a window opens (Fig. 3)

After connecting the device and identifying it, the master control panel is set (here and below the DeVita AP Mini model (Fig. 4) is connected)

### 2. The main control panel menu contains four elements:

«Complexes» - access to the «Basic set» of the provided Complexes together with the device and the set of Complexes drawn up by the user

«Updating» – Management of software updating

«About the Program» – The name of the software program you are using

🇷🇺 – Choosing of language interface

### 3. The field of the main window is divided into three zones:

- «List of Complexes» – database of Programs and Complexes.

- «Complexes» - set of the Complexes intended for recording on the device

- «Interaction with the device» – set of controlling and informational components

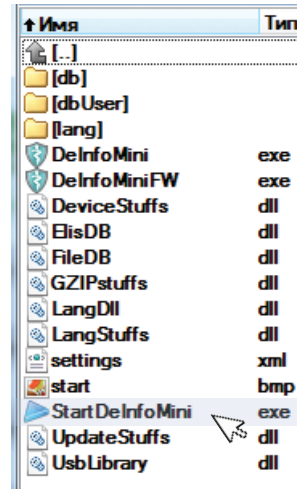


Fig. 2 Starting the program

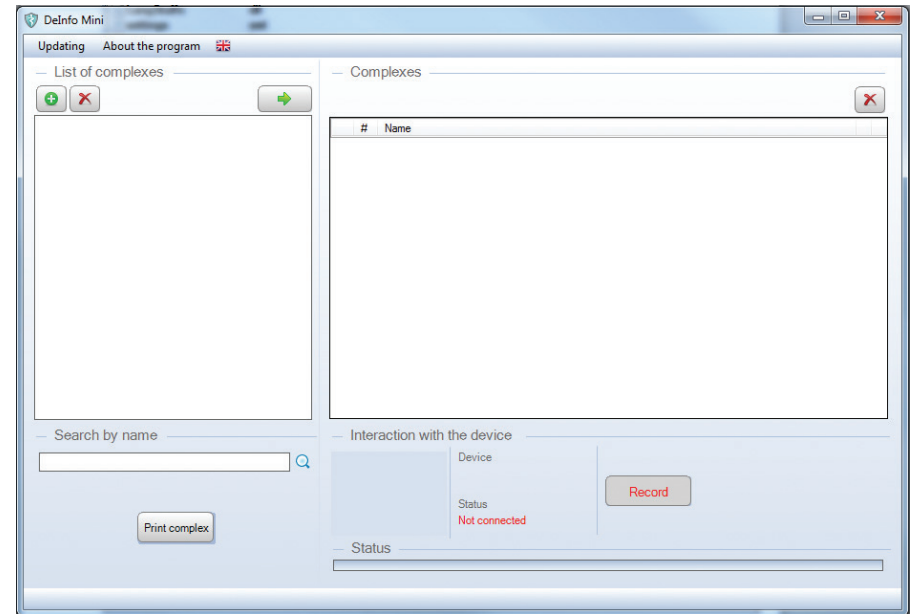


Fig. 3 Interface of the program

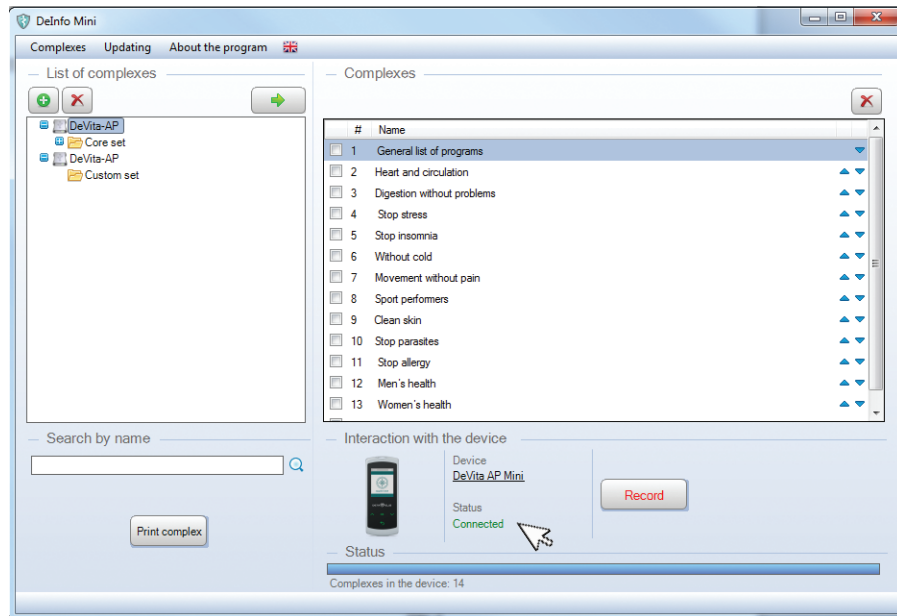



Fig. 4 Connecting the device

## 2.1. Choosing Language Interface

Working with the program begins with choosing the language of the interface.

Select the item  from the main control panel and in the revealed menu – interface language. (Fig 5)

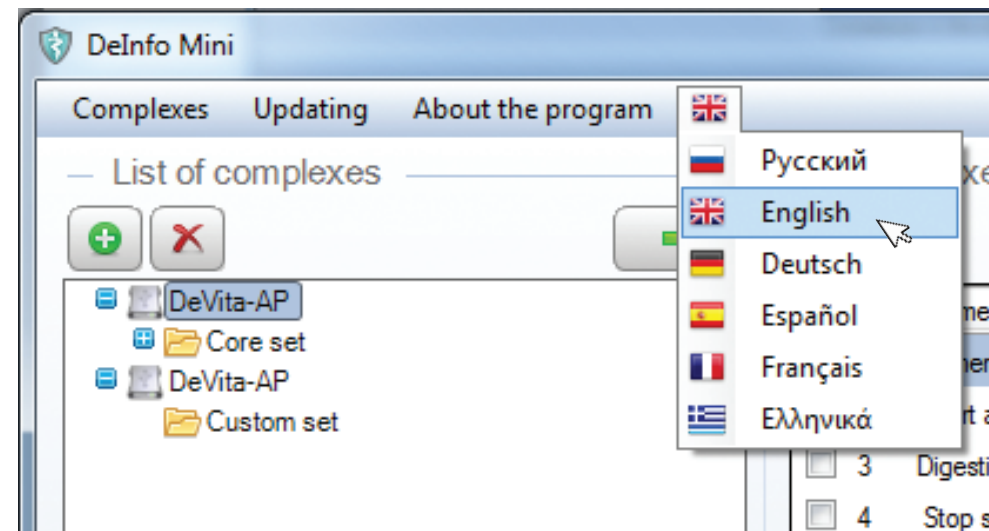





Fig. 5 Selecting the interface language

## 2.2. List of Complexes

It is intended for search and editing of the Complexes, database storage, creating new things as needed and maintenance of existing databases.

The menu of the panel of the list of programs contains three points (Fig. 4):


-  add a Complex
-  delete
-  move

The field of the main window is divided into three zones:

- «List of Complexes» – database of Programs and Complexes.
- «Search for Program by name» - allows work with combinations of letters.
- «Print the complex» - designed to be pre-edited by adding comments and exporting the list of programs included in the Complex.

### 2.2.1. Search for Program by name

On the main control panel, select the item from the «Complexes» menu and in the revealed window titled «All programs». (Fig. 6)

In the search bar,   type a few letters of the complex's name, you are interested in. As the search bar in the «List of Complexes» field, information corresponding to the search parameters will be displayed. In this example, the search result is displayed with the «stop» character. (Fig. 7)

### 2.2.2. Printing Complexes

The command is for previewing and printing a list of programs in the SET as well as application comments. Press ☒ to select complex. Click «Print the complex» button, in the «Print» window that appears, fill in the «Comment to print» field (if necessary) (Fig. 8) and click the «Print» button.

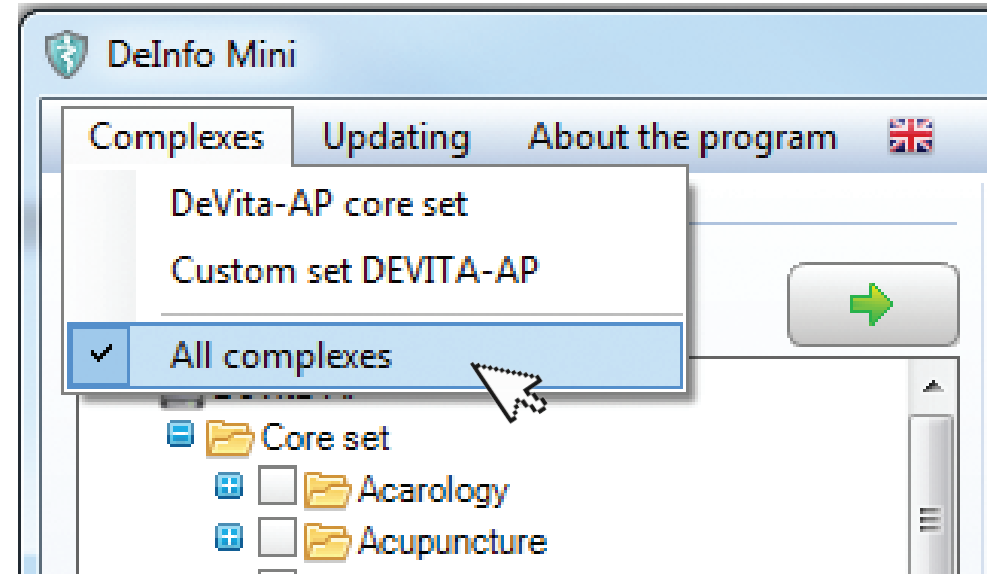


Fig. 6 Select a set

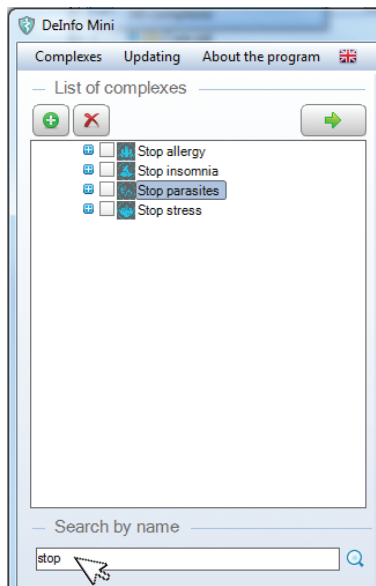


Fig. 7 Search by name

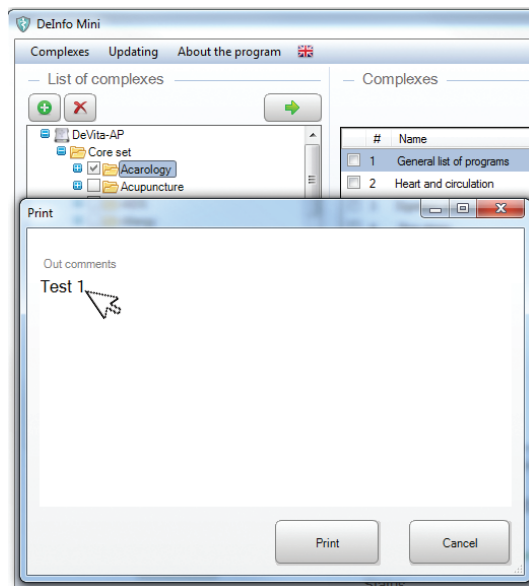


Fig. 8 Comment to printout

The preview window appears. (Fig.9)

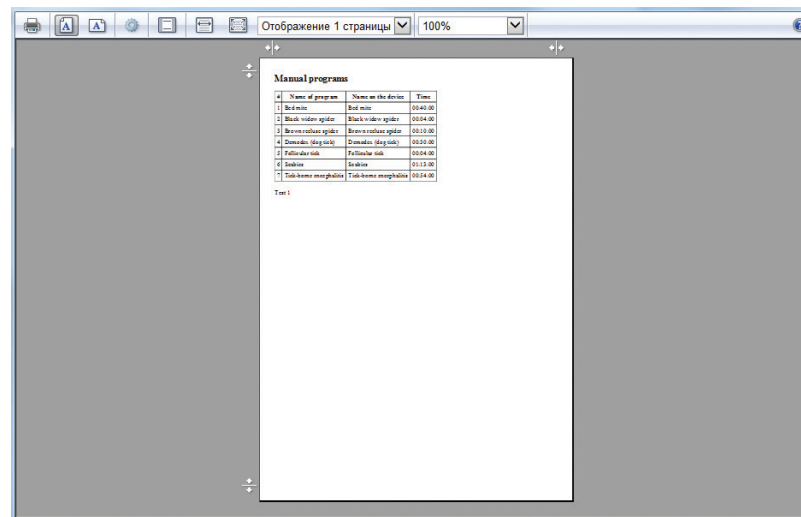


Fig. 9 Preview Panel



The menu item features in the Preview panel are similar to those of the standard print programs (you can specify the functions by pointing the corresponding item).


Printing is done by clicking the Print icon.

## 2.3. WORKING WITH THE BASIC PROGRAMS OF A COMPLEX

Up to 50 Complexes of programs can be stored on the device. When this limit is exceeded, the following warning will be displayed: « You have exceeded the maximum number of complexes. Maximum number of complexes - 50 «.».

### 2.3.1. Formation of a List of Complexes

#### 1. Copy the Complex (Fig. 10)

In the «List of Complexes» window, select the desired Complex using the «Search by Name» feature. By selecting the icon ☒ , и, and clicking the button  , copy it to the «Complexes» window. In the list created, complexes can be overwritten and deleted.

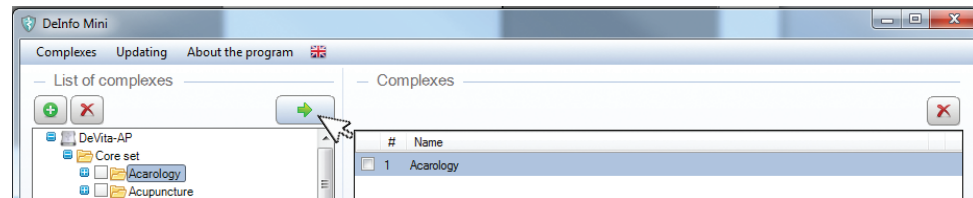


Fig. 10 Copying the complex

#### 2. Controlling Markers

To select with a marker or an icon ☒ the line and hold down the left button of the mouse «to drag» a line to a new location.

To release the mouse button, the program will trade places. (Fig. 11a,b)

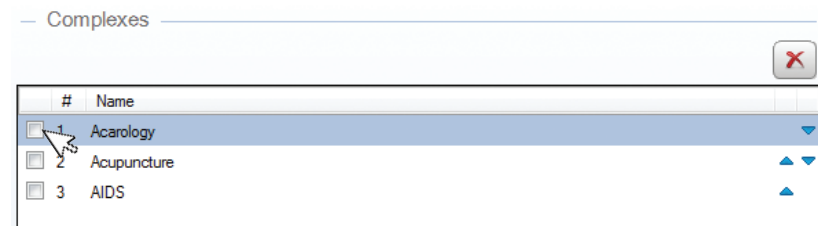


Fig. 11a Managing the marker and the arrows

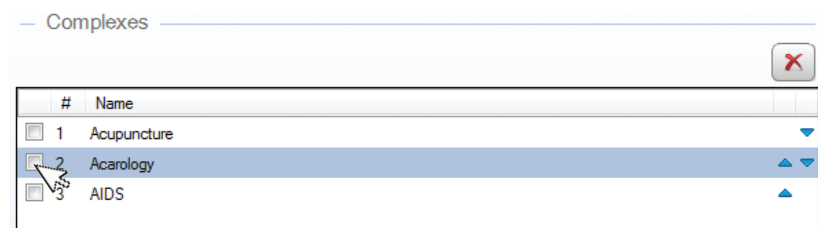


Fig. 11b Managing the marker or the arrows

### 3. Control of Shooters

To select a icon with a marker ▼ ▲, click on the or arrows, to steadily navigate it to a new place.

### 4. Delete a Complex

If necessary, remove the program by selecting the icon ☒ and click on the button

## 2.4. WORKING WITH THE USER'S COMPLEXES

To go to the «Set up» window, you should click the button , located in the top left corner of the «List of complexes». (Fig. 12)

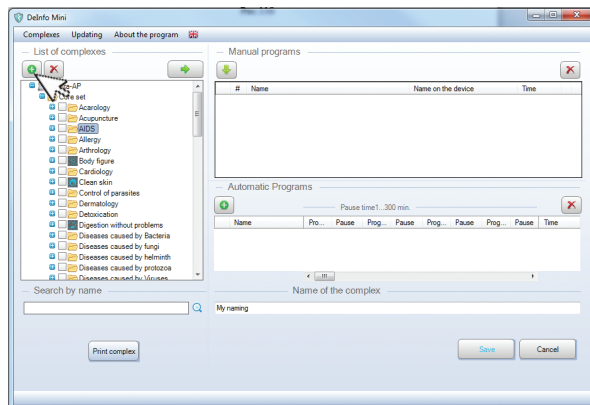


Fig. 12 Creating a complex

The job is essentially the choice between «Manual programs» and «Automatic programs» in the data zone.

Up to 50 sets of programs can be stored on the device. When this limit is exceeded, the following warning will appear: «You have exceeded the maximum number of complexes. Maximum number of complexes – 50».

Each set must include up to 50 programs (manually + automatically). If you exceed the limit, you will see the warning, «You have exceeded the maximum number of complexes. The Maximum number of complexes – 50». The number of characters in the «Name» column of the «Automatic Programs» zone and in the «Program SET Name» line must not exceed 32 characters. If the character limit is exceeded, the warning will be displayed, «The maximum number of characters has been exceeded. Number of characters - not more than 32».

### 2.4.1. Manual Programs

The programs, included from the front panel of the device, work independently from each other.

The «Manual Programs» field window is intended for generating of the list of programs which are written down in the device and is filled in by copying of programs from the «List of complexes» field window.

At the same time, in order to gain access to programs, it is necessary to open a complex next to the name of the complex). (Fig. 13a,b)

The control panel consists of two points:

- Add the programs in the automatic program
- Delete all noted programs from the list

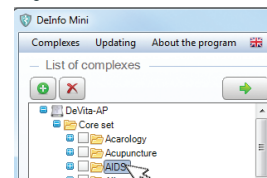


Fig. 13a Open complex

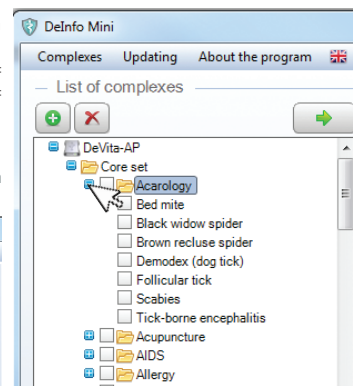



Fig. 13b Open complex

### 2.4.1.1. Formation of the List of Programs

#### 1. Copy programs

In the «List of Complexes» window, select the programs you want. After you mark it with an icon ☒ and clicking the button , copy it in the «Manual Programs» window.

In the list created, the programs can switch positions.

#### 2. Controlling Markers

To select with a marker or an icon ☒ the line and hold down the left button of the mouse «to drag» a line to a new location.

To release the mouse button, the program will trade places.

#### 3. Control of Shooters

To select a icon with a marker, ☒ click on the or arrows  , to steadily navigate it to a new place.



#### 4. Delete the programs

If necessary, remove the program by selecting the icon ☒ and click on the button .

### 2.4.2. Automatic Programs

The programs include a set of programs which are organized in a pre-determined order. The device independently «Wakes up» and «Goes off to sleep» during the entire time of implementation of the automatic program. Thus, the choice and inclusion of the automatic program is done manually. In the «Automatic Programs» field window, a list is intended for the formation of programs which are written down in the device and are filled out by a serial number of the program from a field of the «Manual Programs» window and the pause time setting.

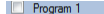
The control panel consists of two points (Fig. 14):


-  to add the automatic program
-  to delete all noted automatic programs

### 2.4.2.1. Formation of the List of Programs

For formation of the list, click on the button . If necessary, set a name for the program.

Set a name for the program. For this purpose, put the cursor in the field, double click and change the name of the program



Specify the icon ☒ programs in the field of the «Manual Programs» window and, by clicking on the button , copy their serial numbers in the «Automatic Programs» window. (Fig. 14)

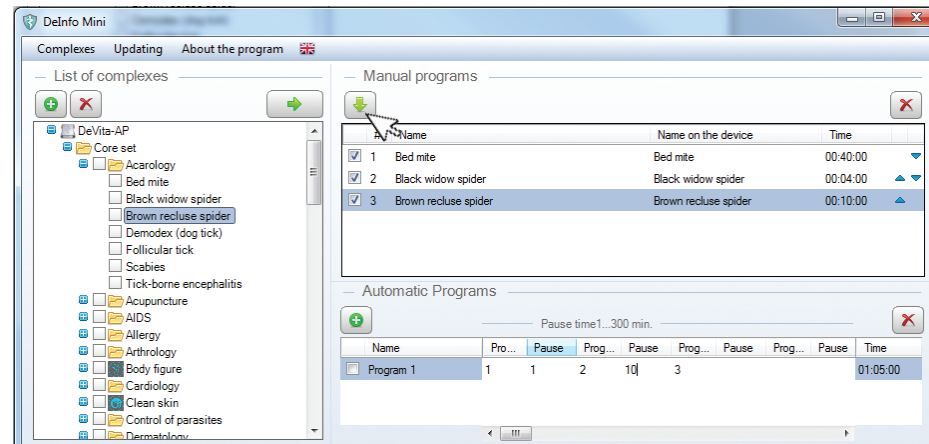


Fig. 14 Forming the list of programs

Columns «Pr. 1 thru Pr.40» in the «Automatic programs» table, while copying programs by the list are filled in sequence of their arrangement in the «Manual Programs» window field. In the event of needing to re-arrange programs in any necessary order, it is necessary to specify and copy the number of each program separately.

Further in the column «Pause», specify the pause time between turning on different programs (time of a pause is set in minutes ranging from 1 to 300). In this example, the pause time is 10 min.

In the column «Time», the general time of implementation of the automatic program is displayed and takes pauses into account.

### 2.4.3 Formation of a User's Complex

Once the «Manual programs» and «Auto programs» lists are created, enter the Complex name in the «Set up the Complex» window (Fig. 15) and click the «Save» button. In this case, the «List of complexes» window will open in «All programs» and the name of the program set up will appear in the user list. (Fig. 16)

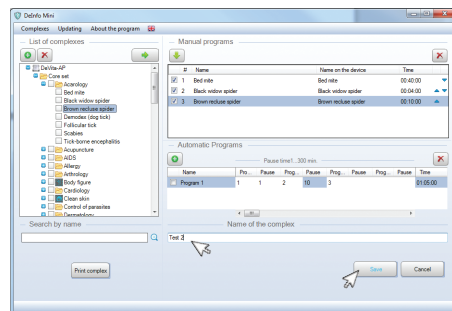


Fig. 15 Name of the complex

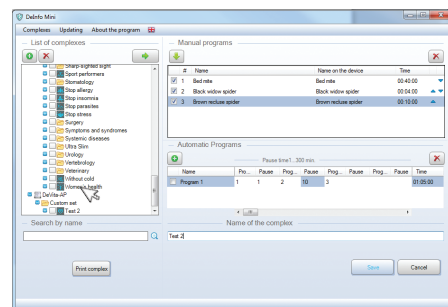


Fig. 16 Custom set

### 2.4.4. Copying the Complex



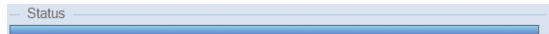
When registering a user-defined program Complex, the file with the same name is automatically written to the dbUser folder located in the DelInfo Mini program directory, from which it can be copied (the file is logged when you exit the program). If the copy file is placed in another user's dbUser folder, then the file with the same name appears in the «User set» of another user's «DelInfo Mini» program.

## 2.5. INTERACTION WITH THE DEVICE

The «Interaction with the Device» field window is intended for realization of management operations of the device.

**Attention!** The device has to be switched on.

The field of the window contains three points:

-  identification of the Connected device
-  archiving the Complexes, located in the «Complexes» window, on the device
-  the state of the archiving/ reading function

### 2.5.1. Device Identification

After connecting the device to the reference book of the software program, the device type should be recognized within 30 seconds. As a result, an image appears in the window according to the identity and connection state of the device.

If necessary, specify the serial number of the reference book and personal user number by clicking on the name of the device. (Fig. 17)

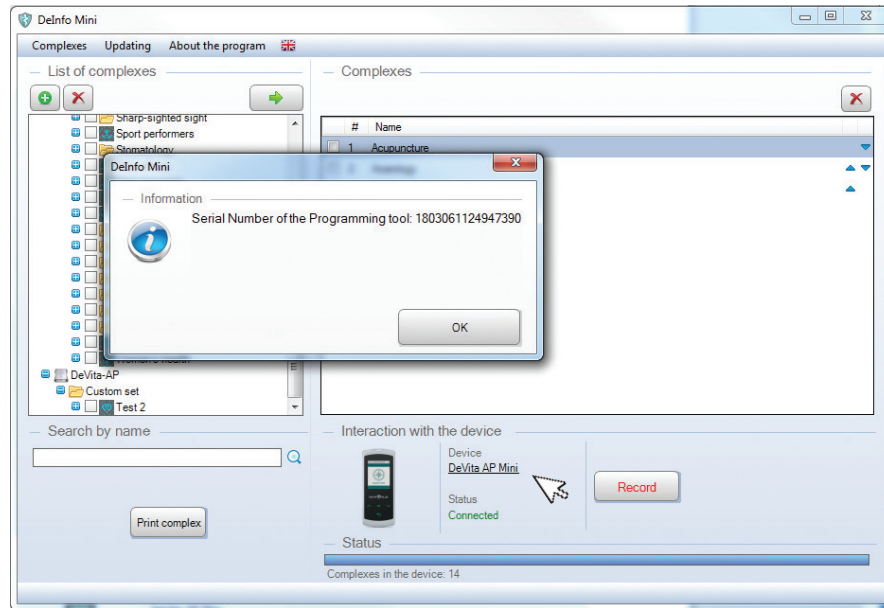


Fig. 17 Identification of the device

## 2.5.2. Recording

By pressing the «Record» button, the programs located in the «Manual» and «Automatic» lists register the device. Thus, the status of the recording process is displayed in the «Status» line. A completely filled «Status» line indicates a successful completion of task. The quantity of the written down programs is displayed under the line. (Fig. 18)

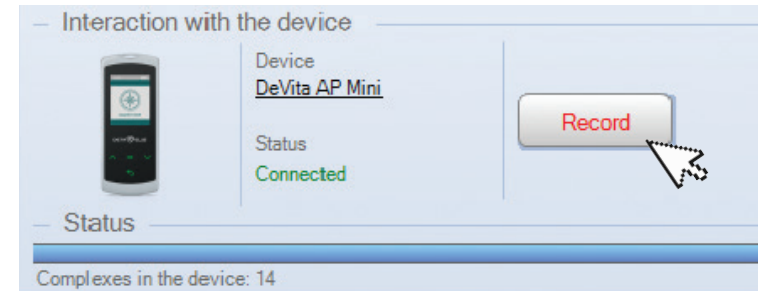


Fig. 18 Recording complex

## 2.5.3. Reading

This command is intended for reading the programs, which have been written down in the device. Further only a few programs can be corrected according to normal procedure.

## 2.6. Updating

The point is intended for carrying out software updates.

Select the «Updating» item on the main control panel and click «Check updatings...». (Fig. 19)

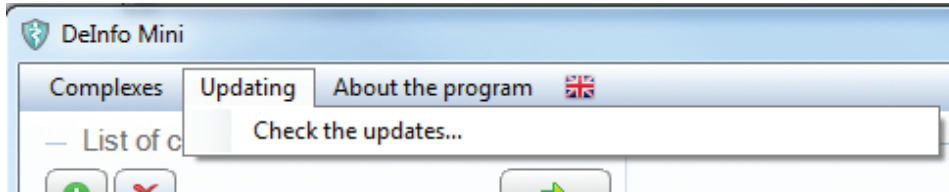


Fig. 19 Updates

If in the «Base of Programs» and «Basic Program» windows there is information on the existence of the new version, execute software updating by clicking on the corresponding «Upload» button (Fig. 20)

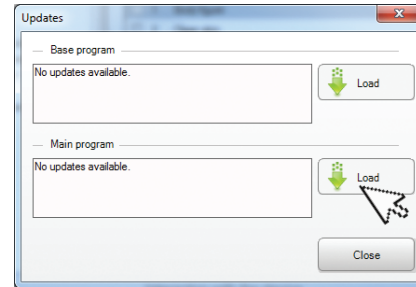


Fig. 20 Downloading updates

## 2.7. About the Program

The point is intended for granting reference material about the program's release number. (Fig. 21)

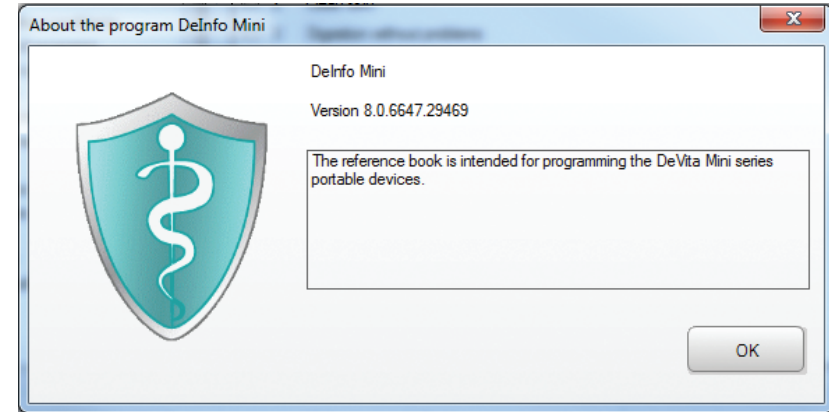


Fig. 21 Reference information

[www.deholding.info](http://www.deholding.info)

Deta-Elis Europa GmbH  
Kaiserserstraße 74,  
63065 Offenbach, Germany